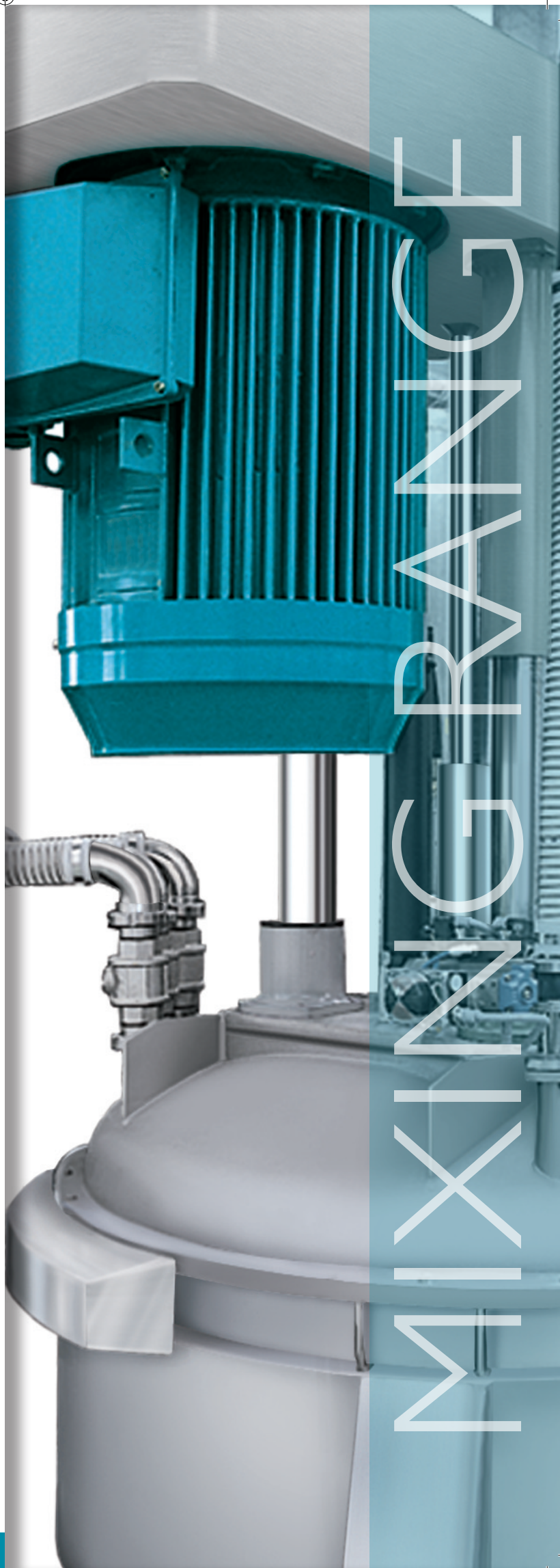


COMEC[™]
a Dromont company

MD

Top Mounted

HIGH EFFICIENCY
DISPERSER

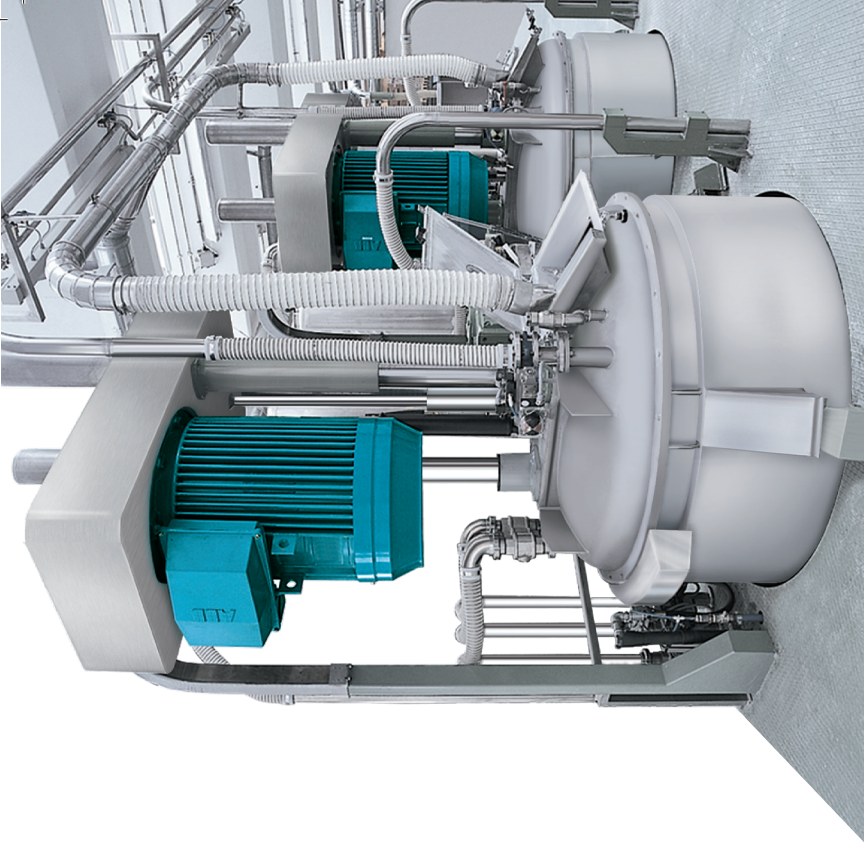


MIXING RANGE

MD

HIGH EFFICIENCY DISPENSER

- Head in thick mild steel with vibration dampeners, available with belt and pulley transmission or with direct coupling
- Shaft in AISI 304 stainless steel with flange connection
- Toothed impeller made of stainless steel, available in 2 models (Cowles or Turbo type)
- Tank with cylindrical construction, in stainless steel available with rounded, tapered or conical bottom
- Available in ATEX version also for Zone 0
- Customized manufacture
- Energy saving with high efficiency motors
- Accurate speed variation from 0 rpm to 1500 rpm



ACCESSORIES

- Different lid versions available in dust, vapors and vacuum tight
- Remote machine monitoring and management
- Scraper of the internal part of the tank gear motor operated
- Different tank blocking systems
- Electronic speed control of the shaft depending on the torque needed
- Vacuum powder loading under the liquid level for an easy and clean powder loading
- The powder gets immediately wet once into the tank without dispersion of dust
- Weighing system with load cells
- PLC and profibus connection to a PC for a complete automatic control
- Double jacket for heating and cooling

MODEL	MOTOR POWER [HP]	IMPELLER DIAMETER [mm]	WIDTH [mm]	HEIGHT [mm]	DEPTH [mm]
MD 20	20	220 - 250	1200	2000 - 2500	1500
MD 30	30	270 - 320	1300	2100 - 2600	1600
MD 40	40	320 - 350	1300	2250 - 2700	1600
MD 50	50	350 - 380	1300	2350 - 2900	1600
MD 60	60	380 - 400	1300	2650 - 3150	1600
MD 75	75	430 - 450	1350	2800 - 3200	1650
MD 100	100	500 - 520	1500	2900 - 3400	1800
MD 125	125	570 - 600	1600	3100 - 3600	1900
MD 150	150	600 - 650	1600	3300 - 3800	1900
MD 180	180	650	1700	3700 - 4200	2000
MD 220	220	700	1800	3700 - 4200	2100
MD 270	270	750	1900	3800 - 4300	2200