

VARITEST

LABORATORY AGITATOR AND DISCONTINUOUS MICROBALLS MILL WITH INTERCHANGEABLE SHAFT

VARITEST laboratory agitators and mills are machines for research, formulation and production of small quantities of paints, inks, ceramic glazes, pharmaceuticals, cosmetics and chemicals.



ADVANTAGES

- Simultaneous mixing and grinding within the same cylinder
- Possibility of preparing the dough directly inside the grinding chamber
- Exceptional degree and homogeneity of refining down to zero residual
- Extremely quick and easy cleaning
- Easy replacement of parts subject to wear

TECHNICAL FEATURES

- Metal support structure with anti-vibration stabilizer reinforcements
- Base and head elements in contoured sheet painted with epoxy powders
- Linear telescopic electric actuator for head raising and lowering
- Electric motor with direct current and equipment in normal version 750W, 220V single-phase voltage
- Electronic speed variation by means of membrane keyboard
- Display of output speed and absorption in percentage
- AISI 304 stainless steel stirring shaft, removable type, protected by an external glissant sleeve and stainless steel eyepiece equipped with support rods on the edge of the container
- AISI 304 stainless steel 55 mm toothed impeller
- AISI 304 stainless steel 55 mm 4-blade impeller
- Container locking system with microswitch for signaling the presence of the container
- Safety micro contact for stopping the impeller before it comes out of the container
- Safety micro contact for stopping the impeller when the container protection casing is opened
- Display for reading RPM and absorption
- Pre-settable timer
- Electrical system in normal version contained in the machine head
- Grinding head and accessories made of special and wear-resistant stainless steel. This unit is easily disassembled for any maintenance or particular cleaning operation in the event that incompatible or special products are used

ACCESSORIES

- Mirror-polished external surface of the basket
- Electric lid lifting device
- Side piston valve for powder loading
- AISI 304 stainless steel funnel for loading additives
- Vacuum pump
- Tubular steel structure with inspection walkway



Toothed impellers ø mm. 55 - 65 - 80



4-blade turbine impellers ø mm. 55 - 65 - 80



Butterfly impeller ø mm. 70



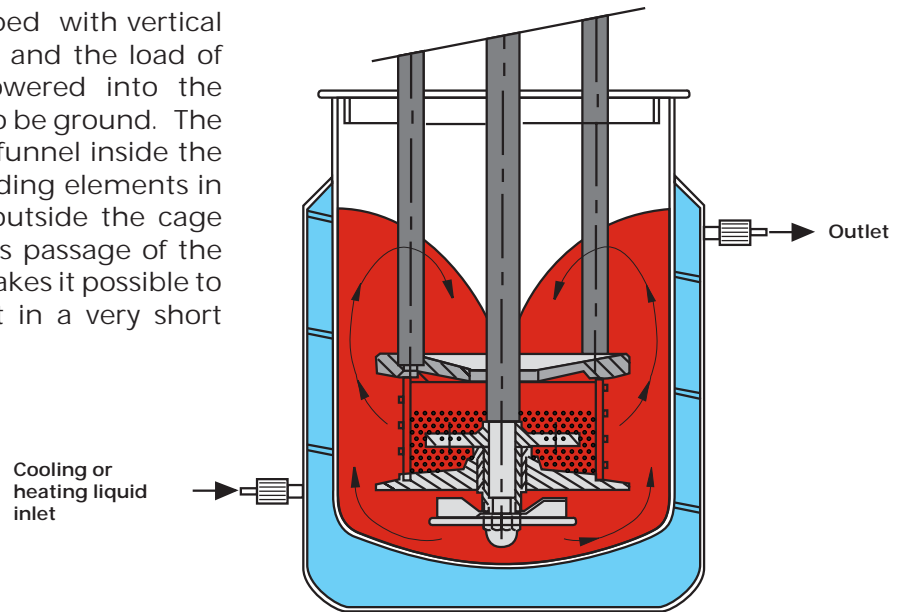
Grinding cage for refining



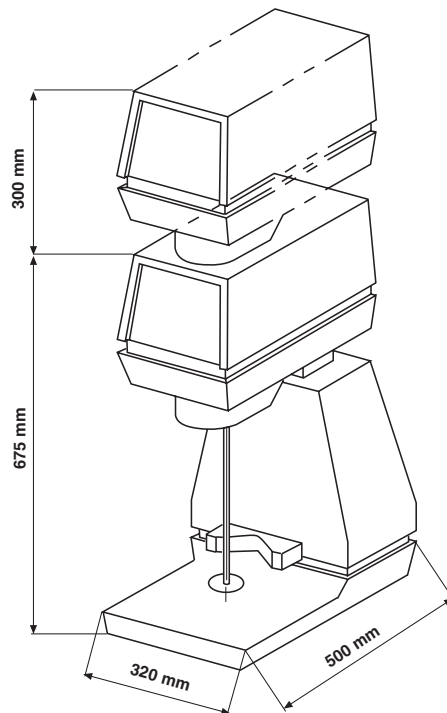
Grinding container

WORKING PRINCIPLE

The cylindrical grinding cage equipped with vertical slits, which houses the grinding wheel and the load of microballs in ceramic or glass, is lowered into the processing container with the mixture to be ground. The product is sucked up from the central funnel inside the cage, enters into contact with the grinding elements in motion, and is immediately expelled outside the cage through the same slits. This continuous passage of the product through the balls in motion makes it possible to obtain the desired level of refinement in a very short time.



TECHNICAL DATA



Model	Engine power (kW)	Shaft variable speed (kW)	Useful capacity (lt)	Microballs charge volume (gr)
VT 750/2	0,75	250-3000	0,5-5	180